

# Allure<sup>®</sup>

## Stored Product Moth Kit



GHS Signal Word: Warning

**Hazard Statements:** Causes serious eye irritation. Causes skin irritation. May cause respiratory irritation.

**Precautionary Statements (Prevention):** Wear protective gloves and eye/face protection. Avoid breathing dust/fume/gas/mist/vapours/spray. Wash contaminated body parts thoroughly after handling.

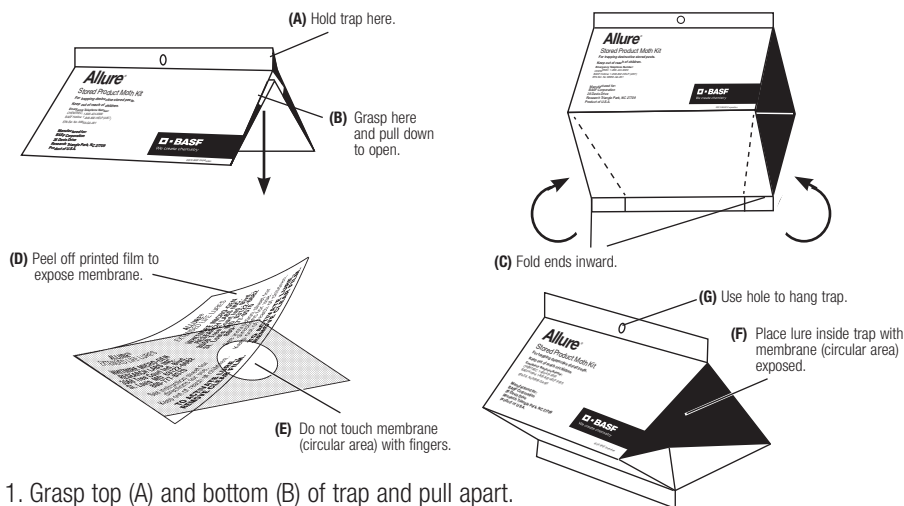
**Precautionary Statements (Response):** Call a POISON CENTER or doctor/physician if you feel unwell. IF IN EYES: Rinse cautiously with water for several minutes. Remove contact lenses, if present and easy to do. Continue rinsing. IF INHALED: Remove person to fresh air and keep comfortable for breathing. IF ON SKIN (or hair): Wash with plenty of soap and water. If skin irritation occurs: Get medical attention. If eye irritation persists: Call a POISON CENTER or physician. Take off contaminated clothing and wash it before reusing.

**Precautionary Statements (Storage):** Store in a well-ventilated place. Keep lid tightly closed. Store locked up.

**Precautionary Statements (Disposal):** Dispose of contents/container to hazardous or special waste collection point.

CAS Number	Weight %	Chemical name
31654-77-0	93.0 %	9,12-Tetradecadien-1-ol, 1-acetate, (9E,12Z)-

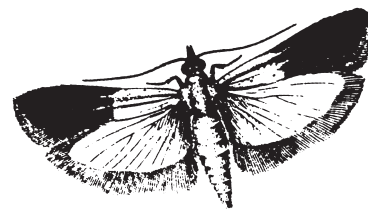
### Allure<sup>®</sup> Diamond Trap Assembly Instructions:



1. Grasp top (A) and bottom (B) of trap and pull apart.
2. Fold perforated ends (C) inward to hold the trap in three dimensional shape as shown.
3. Activate pheromone lure by peeling off printed film (D) to expose membrane (E). Do not touch exposed membrane with fingers.
4. Place the lure inside the trap on the glue, located under the top of the trap (F). To function properly, lures must be placed inside trap with membrane (circular area) facing away from glue.
5. Use the hole on top of trap (G) to hang in appropriate locations with wire or string.

### Indian Meal Moth

*Plodia interpunctella* (Hubner)



(Lure attracts several related species: Almond Moth, Mediterranean Flour Moth, Raisin Moth, Tobacco Moth)

### GEOGRAPHIC RANGE:

Worldwide

### IDENTIFICATION:

**Adult** - All have narrow forewings and broad hind wings and labial palps which project forward forming a snout. Indian Meal Moths are 3/8 to 1/2 inch (10 to 13 millimeters) long with a wingspan of 3/8 to 3/4 inch (16 to 20 millimeters). Forewings are silver-grey, with outer two-thirds coppery brown; hind wings are dirty white. Other species are similar in appearance with grey mottled wings.

**Larvae** - Larvae of the different species are hard to distinguish, appearing dirty white; but may be yellow, pink, brown, or greenish depending on the food source.

### LURE DURATION:

16 weeks

Product of the United Kingdom.

NVA 2023-05-0515-0473

Manufactured for:  
BASF Corporation  
26 Davis Drive  
Research Triangle Park, NC 27709

**BASF**  
We create chemistry

## Trap Placement and Use:

**For monitoring**, evenly space traps in a grid system. Use one trap per 30,000 cubic feet. Hang in appropriate locations with wire or string. Record trap counts on the BASF **Allure**<sup>®</sup> Monitoring Record form.

**To find infestations within the facility**, move traps from uninfested areas to the area where moths have been captured, increasing trap density to as much as one trap per 9,000 cubic feet. Close inspection in the area of maximum trap catch should reveal the infestation source.

**Mass trapping** can be accomplished with trap densities of one or more traps per 3,000 cubic feet, depending on the size of the moth population. Inspect traps weekly and remove insects and debris. Replace trap if insects, dust, or debris reduce stickiness. The pheromone lure lasts 16 weeks and can be removed and used on new traps.

Obtain further information and local recommendations from your state Agricultural Extension Service, local pest control company, or a consulting entomologist.

**Note:** To prolong storage life of the pheromone packet, refrigerate or freeze. Use tweezers or rubber gloves in handling to avoid contaminating packets when different **Allure**<sup>®</sup> products are being used. Do not damage the lure membrane by stapling, pinning or nailing the packet to the trap.

## COMMODITIES ATTACKED:

Broken grain and grain products; biscuits; candy; chocolate; cocoa beans; cornmeal; crackers; dog food; dried fruits; nuts; powdered milk; red peppers; seeds; shelled or ear corn; tobacco; and whole wheat or graham flour.

### Conditions of Sale and Warranty

The **Directions For Use** of this product reflect the opinion of experts based on use and tests. The directions are believed to be reliable and must be followed carefully. However, it is impossible to eliminate all risks inherently associated with the use of this product. Ineffectiveness or other unintended consequences may result because of such factors as weather conditions, placement, presence of other materials, or use of the product in a manner inconsistent with its directions, all of which are beyond the control of BASF CORPORATION ("BASF") or the Seller. All such risks shall be assumed by the Buyer. BASF warrants that this product conforms to the chemical description on the label and is reasonably fit for the purposes referred to in the **Directions For Use**, subject to the inherent risks, referred to above. **BASF MAKES NO OTHER EXPRESS OR IMPLIED WARRANTY OF FITNESS OR MERCHANTABILITY OR ANY OTHER EXPRESS OR IMPLIED WARRANTY. BUYER'S EXCLUSIVE REMEDY AND BASF'S EXCLUSIVE LIABILITY, WHETHER IN CONTRACT, TORT, NEGLIGENCE, STRICT LIABILITY, OR OTHERWISE, SHALL BE LIMITED TO REPAYMENT OF THE PURCHASE PRICE OF THE PRODUCT. BASF AND THE SELLER DISCLAIM ANY LIABILITY FOR CONSEQUENTIAL, EXEMPLARY, SPECIAL OR INDIRECT DAMAGES RESULTING FROM THE USE OR HANDLING OF THIS PRODUCT.** BASF and the Seller offer this product, and the Buyer and User accept it, subject to the foregoing **Conditions of Sale and Warranty** which may be varied only by agreement in writing signed by a duly authorized representative of BASF.

NFR PCS714

1-800-832-HELP (4357) • pestcontrol.basf.us  
© 2015 BASF Corporation. All rights reserved

Manufactured for:  
BASF Corporation  
26 Davis Drive  
Research Triangle Park, NC 27709

NVA 2023-04-0515-0122

 **BASF**

We create chemistry